



Electronic Heating Energy Meters

WFM... WFQ...
WFP... WFO...

**Electronic, mains-independent meters to acquire heating energy consumption in autonomous heating and domestic hot water plants.
Storage and display of the cumulated consumption values on a selectable set day.
Available as single-jet meters in «combined» all-in-one or split version.
Nominal flow rates of single-jet meters 0.6 m³/h, 1.5 m³/h or 2.5 m³/h.
The electronic heat meter is a component of the Q AMR System and the Q M-Bus System.**

Application

The electronic heat meters are used for measuring heating and cooling energy. Their major field of use are central heating and cooling plants, where heating and cooling energy is delivered individually to several consumers.

Plants of this type are used in buildings such as

- multi-family houses
- office and administrative buildings

Typical users are:

- Private building owners
- Property associations
- Building maintenance companies
- Housing estate agents

Functions

- Acquisition of heating energy consumption based on the measurement of flow rate and temperature differential
- Cumulation of the consumption values
- Storage of the cumulated consumption values on the set day
- Display of the consumption values
- Display of the key operational data
- Self-supervision, with fault indication
- Data transmission via M-Bus or radio

Type summary

List of heating energy meters

M-Bus-Versions

Place of installation: Return Temperature sensors Ø 5 mm

Nominal flow rate q_p	Mounting length	Cable length	Immersion	Return temp. sensor	Communication	Place of installation	Type reference **
0,6 m ³ /h	110 mm	1,5 m	directly	integrated	via M-Bus *	Return	WFM21.B111
1,5 m ³ /h	110 mm	1,5 m	directly	integrated	via M-Bus *	Return	WFM21.D111
2,5 m ³ /h	130 mm	1,5 m	directly	integrated	via M-Bus *	Return	WFM21.E131
0,6 m ³ /h	110 mm	2,5 m	directly	integrated	via M-Bus *	Return	WFM21.B112
1,5 m ³ /h	110 mm	2,5 m	directly	integrated	via M-Bus *	Return	WFM21.D112
2,5 m ³ /h	130 mm	2,5 m	directly	integrated	via M-Bus *	Return	WFM21.E132
1,5 m ³ /h	80 mm	1,5 m	directly	not integrated	via M-Bus*	Return	WFQ21.D081
1,5 m ³ /h	80 mm	2,5 m	directly	not integrated	via M-Bus*	Return	WFQ21.D082
1,5 m ³ /h	110 mm	1,5 m	indirectly	integrated	via M-Bus *	Return	WFM21.D115
2,5 m ³ /h	130 mm	1,5 m	indirectly	integrated	via M-Bus *	Return	WFM21.E135
1,5 m ³ /h	110 mm	2,5 m	indirectly	integrated	via M-Bus *	Return	WFM21.D116
2,5 m ³ /h	130 mm	2,5 m	indirectly	integrated	via M-Bus *	Return	WFM21.E136

Place of installation: Return Temperature sensors Ø 5,2 mm

Nominal flow rate q_p	Mounting length	Cable length	Immersion	Return temp. sensor	Communication	Place of installation	Type reference **
1,5 m ³ /h	80 mm	1,5 m	directly	not integrated	via M-Bus *	Return	WFQ21.D087
1,5 m ³ /h	110 mm	1,5 m	indirectly	integrated	via M-Bus *	Return	WFM21.D117
2,5 m ³ /h	130 mm	1,5 m	indirectly	integrated	via M-Bus *	Return	WFM21.E137

Place of installation: Supply Temperature sensors Ø 5 mm

Nominal flow rate q_p	Mounting length	Cable length	Immersion	flow temp. sensor	Communication	Place of installation	Type reference **
1,5 m ³ /h	80 mm	1,5	directly	not integrated	via M-Bus *	Supply	WFO21.D081
0,6 m ³ /h	110 mm	1,5 m	directly	integrated	via M-Bus *	Supply	WFP21.B111
1,5 m ³ /h	110 mm	1,5 m	directly	integrated	via M-Bus *	Supply	WFP21.D111
1,5 m ³ /h	110 mm	1,5 m	indirectly	integrated	via M-Bus *	Supply	WFP21.D115
2,5 m ³ /h	130 mm	1,5 m	directly	integrated	via M-Bus *	Supply	WFP21.E131
2,5 m ³ /h	130 mm	1,5 m	indirectly	integrated	via M-Bus *	Supply	WFP21.E135

* Prepared for communication via M-Bus

** Abbreviation

Pulse Output-Versions

Place of installation: Return <i>Temperature sensors Ø 5 mm</i>							
<i>Nominal flow rate q_p</i>	<i>Mounting length</i>	<i>Cable length</i>	<i>Immer-sion</i>	<i>Return temp. sensor</i>	<i>Communication</i>	<i>Place of installation</i>	<i>Type reference **</i>
0,6 m³/h	110 mm	1,5 m	directly	integrated	Pulse Output	Return	WFM24.B111
1,5 m³/h	110 mm	1,5 m	directly	integrated	Pulse Output	Return	WFM24.D111
2,5 m³/h	130 mm	1,5 m	directly	integrated	Pulse Output	Return	WFM24.E131
0,6 m³/h	110 mm	2,5 m	directly	integrated	Pulse Output	Return	WFM24.B112
1,5 m³/h	110 mm	2,5 m	directly	integrated	Pulse Output	Return	WFM24.D112
2,5 m³/h	130 mm	2,5 m	directly	integrated	Pulse Output	Return	WFM24.E132
1,5 m³/h	80 mm	1,5 m	directly	not integrated	Pulse Output	Return	WFQ24.D081
1,5 m³/h	80 mm	2,5 m	directly	not integrated	Pulse Output	Return	WFQ24.D082
1,5 m³/h	110 mm	1,5 m	indirectly	integrated	Pulse Output	Return	WFM24.D115
2,5 m³/h	130 mm	1,5 m	indirectly	integrated	Pulse Output	Return	WFM24.E135
1,5 m³/h	110 mm	2,5 m	indirectly	integrated	Pulse Output	Return	WFM24.D116
2,5 m³/h	130 mm	2,5 m	indirectly	integrated	Pulse Output	Return	WFM24.E136

Place of installation: Return <i>Temperature sensors Ø 5,2 mm</i>							
<i>Nominal flow rate q_p</i>	<i>Mounting length</i>	<i>Cable length</i>	<i>Immer-sion</i>	<i>Return temp. sensor</i>	<i>Communication</i>	<i>Place of installation</i>	<i>Type reference **</i>
1,5 m³/h	80 mm	1,5 m	directly	not integrated	Pulse Output	Return	WFQ24.D087
1,5 m³/h	110 mm	1,5 m	indirectly	integrated	Pulse Output	Return	WFM24.D117
2,5 m³/h	130 mm	1,5 m	indirectly	integrated	Pulse Output	Return	WFM24.E137

Place of installation: Supply <i>Temperature sensors Ø 5 mm</i>							
<i>Nominal flow rate q_p</i>	<i>Mounting length</i>	<i>Cable length</i>	<i>Immer-sion</i>	<i>flow temp. sensor</i>	<i>Communication</i>	<i>Place of installation</i>	<i>Type reference **</i>
0,6 m³/h	110 mm	1,5 m	directly	integrated	Pulse Output	Supply	WFP24.B111
1,5 m³/h	110 mm	1,5 m	directly	integrated	Pulse Output	Supply	WFP24.D111
2,5 m³/h	130 mm	1,5 m	directly	integrated	Pulse Output	Supply	WFP24.E131
0,6 m³/h	110 mm	2,5 m	directly	integrated	Pulse Output	Supply	WFP24.B112
1,5 m³/h	110 mm	2,5 m	directly	integrated	Pulse Output	Supply	WFP24.D112
2,5 m³/h	130 mm	2,5 m	directly	integrated	Pulse Output	Supply	WFP24.E132
1,5 m³/h	80 mm	1,5 m	directly	not integrated	Pulse Output	Supply	WFO24.D081
1,5 m³/h	80 mm	2,5 m	directly	not integrated	Pulse Output	Supply	WFO24.D082
1,5 m³/h	110 mm	1,5 m	indirectly	integrated	Pulse Output	Supply	WFP24.D115
2,5 m³/h	130 mm	1,5 m	indirectly	integrated	Pulse Output	Supply	WFP24.E135
1,5 m³/h	110 mm	2,5 m	indirectly	integrated	Pulse Output	Supply	WFP24.D116
2,5 m³/h	130 mm	2,5 m	indirectly	integrated	Pulse Output	Supply	WFP24.E136

** Abbreviation

Radio 868 MHz- Versions

Place of installation: Return Temperature sensors Ø 5 mm

Nominal flow rate q_p	Mounting length	Cable length	Immersion	Return temp. sensor	Communication	Place of installation	Type reference **
0,6 m³/h	110 mm	1,5 m	directly	integrated	Radio 868 MHz	Return	WFM26.B111
1,5 m³/h	110 mm	1,5 m	directly	integrated	Radio 868 MHz	Return	WFM26.D111
2,5 m³/h	130 mm	1,5 m	directly	integrated	Radio 868 MHz	Return	WFM26.E131
0,6 m³/h	110 mm	2,5 m	directly	integrated	Radio 868 MHz	Return	WFM26.B112
1,5 m³/h	110 mm	2,5 m	directly	integrated	Radio 868 MHz	Return	WFM26.D112
2,5 m³/h	130 mm	2,5 m	directly	integrated	Radio 868 MHz	Return	WFM26.E132
1,5 m³/h	80 mm	1,5 m	directly	not integrated	Radio 868 MHz	Return	WFQ26.D081
1,5 m³/h	80 mm	2,5 m	directly	not integrated	Radio 868 MHz	Return	WFQ26.D082
1,5 m³/h	110 mm	1,5 m	indirectly	integrated	Radio 868 MHz	Return	WFM26.D115
2,5 m³/h	130 mm	1,5 m	indirectly	integrated	Radio 868 MHz	Return	WFM26.E135
1,5 m³/h	110 mm	2,5 m	indirectly	integrated	Radio 868 MHz	Return	WFM26.D116
2,5 m³/h	130 mm	2,5 m	indirectly	integrated	Radio 868 MHz	Return	WFM26.E136

Place of installation: Return Temperature sensors Ø 5,2 mm

Nominal flow rate q_p	Mounting length	Cable length	Immersion	Return temp. sensor	Communication	Place of installation	Type reference **
1,5 m³/h	80 mm	1,5 m	directly	not integrated	Radio 868 MHz	Return	WFQ26.D087
1,5 m³/h	110 mm	1,5 m	indirectly	integrated	Radio 868 MHz	Return	WFM26.D117
2,5 m³/h	130 mm	1,5 m	indirectly	integrated	Radio 868 MHz	Return	WFM26.E137

Place of installation: Supply Temperature sensors Ø 5 mm

Nominal flow rate q_p	Mounting length	Cable length	Immersion	flow temp. sensor	Communication	Place of installation	Type reference **
0,6 m³/h	110 mm	1,5 m	directly	integrated	Radio 868 MHz	Supply	WFP26.B111
1,5 m³/h	110 mm	1,5 m	directly	integrated	Radio 868 MHz	Supply	WFP26.D111
1,5 m³/h	110 mm	1,5 m	indirectly	integrated	Radio 868 MHz	Supply	WFP26.D115
2,5 m³/h	130 mm	1,5 m	directly	integrated	Radio 868 MHz	Supply	WFP26.E131
2,5 m³/h	130 mm	1,5 m	indirectly	integrated	Radio 868 MHz	Supply	WFP26.E135

** Abbreviation

Scope of delivery of heating energy meters

Item	Temperature sensors, length and immersion					Packing
	80 mm	110 mm, directly	110 mm, indirectly	130 mm, directly	130 mm, indirectly	
Flow measuring section	•	•	•	•	•	Box
Electronic unit	•	•	•	•	•	Box
Temperature sensor with fitting	•	•	•	•	•	Box
Bracket	•	•	•	•	•	Box
Protective cap	2x	2x	2x	2x	2x	Box
Mounting instructions	•	•	•	•	•	Box
Commissioning and operating instructions	•	•	•	•	•	Box
Flat seal	2x	2x	2x	2x	2x	Bag 1
Sealing wire	3x	2x	2x	2x	2x	Bag 1
Self-lock seal (Adhesive seal)	3x	2x	2x	2x	2x	Bag 1
Fischer dowel S6	2x	2x	2x	2x	2x	Bag 2
Screws C 4.2x25	2x	2x	2x	2x	2x	Bag 2

List of mounting kits

Scope of delivery, description	Type reference
For 80 mm mounting length, both sensors directly immersed, flow temp. sensor in ball valve	WFZ.E80
For 80 mm mounting length, return temp. sensors directly immersed, flow temp. sensor in ball valve	WFZ.E80G3
For 110 mm mounting length, return temp. sensors directly immersed, flow temp. sensor in ball valve	WFZ.E110-I
For 110 mm mounting length, return temp. sensor indirectly immersed, flow temp. immersion sleeve	WFZ.E110-IT
For 110 mm mounting length, return temp. sensor directly immersed, flow temp. ball valve	WFZ.E110G3-I
For 110 mm mounting length, return temp. sensor indirectly immersed, flow temp. immersion sleeve	WFZ.E110G3-IT
For 130 mm mounting length, return temp. sensor directly immersed, flow temp. ball valve	WFZ.E130-I
For 130 mm mounting length, return temp. sensor indirectly immersed, flow temp. immersion sleeve	WFZ.E130-IT
For 130 mm mounting length, return temp. sensor directly immersed, flow temp. ball valve	WFZ.E130G1-I
For 130 mm mounting length, return temp. sensor indirectly immersed, flow temp. immersion sleeve	WFZ.E130G1-IT

Scope of delivery of mounting kits

Accessory	WFZ									
	E80	E80G3	E110-I	E110-IT	E110G3-I	E110G3-IT	E130-I	E130-IT	E130G1-I	E130G1-IT
Spacer	•	•	•	•	•	•	•	•	•	•
Ball valve, internally threaded ½", for use in return pipe, cap nut * ¾", with thread for sensor, flat seal ¾"	•	•								
Ball valve, internally threaded ½", for use in return pipe, cap nut* ¾", flat seal ¾"	•	•	2x	2x	2x	2x				
Ball valve, internally threaded ¾", for use in return pipe, fitting ¾" with cap nut 1", flat seal 1"							2x	2x	2x	2x
Ball valve, internally threaded ½", for use in supply pipe, with thread for sensor	•		•							
Ball valve, internally threaded ¾", for use in supply pipe, with thread for sensor		•			•		•			
Ball valve, internally threaded 1", for use in supply pipe, with thread for sensor									•	
T-piece, internally threaded ½", for use in supply pipe				•						
T-piece, internally threaded ¾", for use in supply pipe						•		•		
T-piece, internally threaded 1", for use in supply pipe										•
Immersion sleeve M10x1				•		•		•		•

* Cap nut integrated in ball valve (cannot be removed)

List of accessories

Accessory	Description, scope of delivery	Type reference
Spacer	For mounting length 80 mm (¾" male)	WFZ.R80
Spacer	For mounting length 110 mm (¾" male)	WFZ.R110
Spacer	For mounting length 130 mm (1" male)	WFZ.R130
Ball valve	Connecting thread ½", with thread for sensor	WFZ.K15
Ball valve	Connecting thread ¾", with thread for sensor	WFZ.K18
Ball valve	Connecting thread 1", with thread for sensor	WFZ.K22
T-piece	Internally threaded ½", with immersion sleeve M10x1	WFZ.T16/M
T-piece	Internally threaded ¾", with immersion sleeve M10x1	WFZ.T16
T-piece	Internally threaded 1", with immersion sleeve M10x1	WFZ.T19/M
Covering plate IV	Chromium-plated	WFZ.T19
M-Bus connection kit	1 plug with cable (1 m long; 1 adhesive label)	WFZ.T22/M
Spacer	For mounting length 80 mm (¾" male)	WFZ.T22
Spacer	For mounting length 110 mm (¾" male)	WFZ.T50
Spacer	For mounting length 130 mm (1" male)	WFZ.T52
Ball valve	Connecting thread ½", with thread for sensor	WFZ.B4
Ball valve	Connecting thread ¾", with thread for sensor	WFZ.MBUSSET

Ordering

The electronic heat meter comes as standard with an M-Bus output. If the heat meter is connected to a M-Bus Metering System, the M-Bus connection kit is required. For the pulse output version the M-Bus connection kit is also required.

If a set day other than 31 December is required, the desired month is to be added to the type reference when ordering (normally, the last day of the month is the set day).
Ordering example for a heat meter, 110 mm mounting length, set day 30 April:

WFM21.B111, set day: April

Technical design

Measurement principle

The meter operates based on the single-jet measurement principle where the water jet hits the impeller tangentially. The impeller's speed is sensed electronically without producing a magnetic field.

The temperatures in the supply and return pipes are measured with immersion type platinum sensing elements (PT500).

Acquisition of heat consumption

The heat meter is equipped either for installation in the return or in the supply. Please select the corresponding meter from the type list for the place of installation.

The flow measuring section measures the flow continuously and the flow and return temperatures at least once in four minutes. A microprocessor in the flow measuring section determines the temperature differential, which the microprocessor uses along with the mean flow rate and the heat coefficient, to calculate the amount of heat consumed.

Storage of consumption values

The heating energy consumption values are continuously cumulated. At 23.59 hours of the next set day, the actual meter reading will be stored.

The set day is factory-set, the standard setting being 31 December (also refer to «Ordering»).

At the same time the annual consumption values are stored, the meter calculates a verification code. Tenants who make their own reading need to give this code to the billing centre, along with the set day reading. This enables the billing centre to verify the reading.

The stored set day value will be retained for one year.

Display

The heat meter has three display levels which show the following values and variables:
(One display level is missing in the Radio 868 MHz-Versions)

- Cumulated heating energy consumption since the last set day
- Segment test
- Actual heating output
- Actual flow rate
- Actual flow temperature
- Actual return temperature
- Actual temperature differential
- Meter's number of operating hours since it was first installed
- Set day and set month
- Stored heating energy consumption of previous year
- Stored heating energy consumption of the last 15 month **(is missing in the Radio 868 MHz-Versions)**
- Verification code
- Cumulated heating energy consumption since the meter was first installed
- Indication of faults (also refer to section below)

The units displayed are °C or K, kWh (or GJ on request), m³/h, kW, and hours.
Standard display is the cumulated heating energy consumption.

Fault status signals

The meter monitors itself and can display faults it has detected. It differentiates between two categories of faults.

- Temporary faults: they have no impact on the correct functioning of the meter.
- Severe functional faults: the measurements have been stopped. In that case, the display alternates between error code and date the fault occurred the first time.
The values that have been cumulated until the fault first occurred remain stored.

Mechanical design

The heat energy meter is comprised of flow measuring section, electronic unit and two temperature sensors. The flow measuring section is mounted in the piping with the help of fittings. It is made of nickel-plated brass and contains the measuring chamber with the single-jet impeller. The inlet has a strainer to retain larger dirt particles. The meter is supplied as a compact all-in-one unit, but the electronic unit can be detached if required (split version).

Electronic display unit

The electronic display unit houses the electronics and the eight-digit LCD. The operating voltage of DC 3 V is supplied by a lithium battery. Below the display, there is a button for advancing the display.

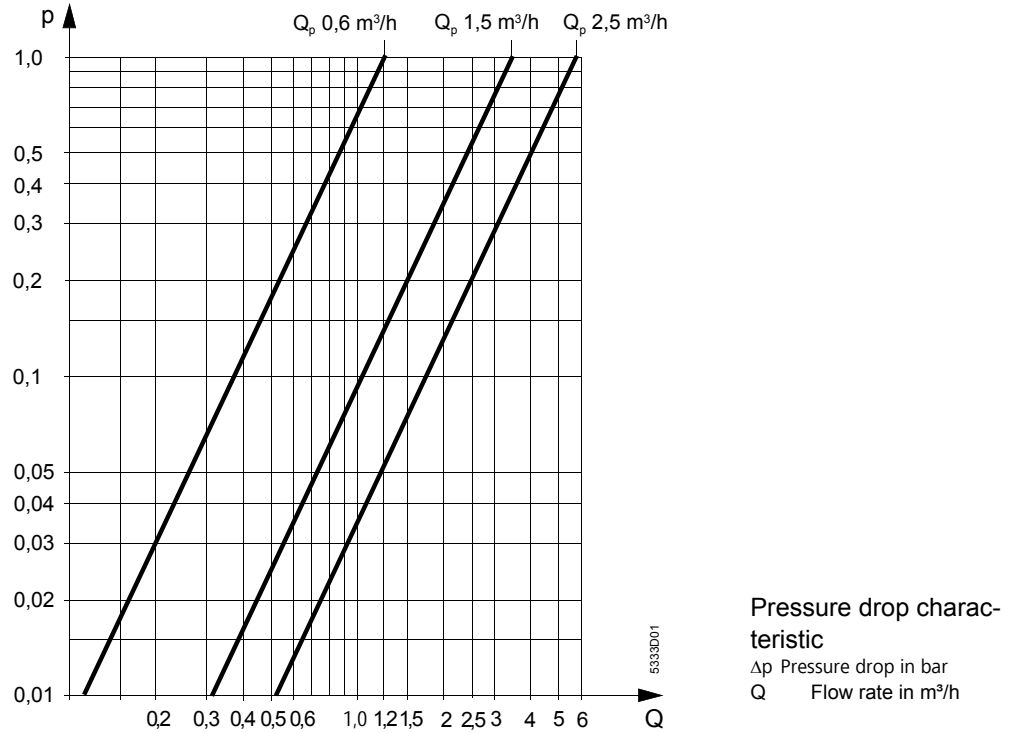
The electronic display unit on the flow measuring section can be swiveled through 270° and tilted by 90°.

Temperature sensors

The temperature sensors are immersion type sensors. They are immersed either indirectly or directly. The temperature sensors consist of an immersion rod the end of which carries the sensing element (Pt 500), the threaded nipple, and the shielded silicon cable which establishes the connection to the electronic display unit.

The temperature sensors are designed for fitting in ball valves (direct immersion) or immersion sleeves (indirect immersion).

The temperature sensors used are ready mounted, approved, mounted as pairs, or certified.



Mounting notes

Electrostatic Sensitive Devices



All modules integrated in the meters may be at risk of electrostatic interference. The freely accessible contacts (cable end, plug connector) are only partially protected against interference.

Skilled personnel should avoid wearing polyester clothing and shoes with plastic soles as this type of clothing promotes electrostatic charging.

Electrostatic charging of skilled personnel must be discharged when handling open components e.g. by touching an earthed piping system.

Mounting

- The local regulations for the use of heating energy meters (mounting, sealing, operation, etc.) must be complied with
- Dependent on type, the heat energy meter must be mounted either in the supply or the return pipe between two shut-off valves (see type summary). To facilitate readout and service work, it should be easily accessible
- A smoothing path is required just upstream of the meter:
 - 150 mm with the mounting lengths 80 mm and 110 mm
 - 200 mm with the mounting length 130 mm
- If the meter is only used at the time of commissioning, it is possible to fit the spacer first
- Prior to mounting the meter, the piping must be thoroughly flushed; for this purpose, the spacer is to be used
- When mounting the meter, the direction of flow (indicated by an arrow on the body) must be observed
- If T-pieces of other manufactures are used, it must be ensured that they are compliant with EN1434
- The electronic display unit can be mounted away from the flow measuring section (split version). If the hole in the wall is too large for the display unit, it can be mounted with the help of the mounting cover. If required, a chromium-plated covering plate can be used
- The display unit should be located such that it is easy to read
- After mounting, the required test pressure must be applied to the plant

- The display unit, the two temperature sensors and the fittings must be sealed to ensure protection against tampering.
If required, the M-Bus service interface must also be sealed
- The piece of piping where the temperature sensors are located should be lagged

Operating notes

- For recalibration, the local regulations must be observed.

Technical data

Measurement accuracy class	3 to EN 1434			
Environmental class	A to EN 1434			
Unit of energy				
Standard	kWh			
On request	GJ			
Flow rates	0.6 m³/h	1.5 m³/h	2.5 m³/h	
Min. flow rate q_i (Q_{min}) H / V	6 / 12 l/h	15 / 30 l/h	25 / 50 l/h	
Nominal flow rate q_p (Q_{nenn})	600 l/h	1500 l/h	2500 l/h	
Max. flow rate q_s (Q_{max})	1200 l/h	3000 l/h	5000 l/h	
Starting flow, horizontal	1.2 l/h	3 l/h	5 l/h	
Max. perm operating pressure	16 bar			
Range of use of flow measuring section	1... 90 °C			
Temperature measurement				
Measurement range temp. sensor	20...110 °C			
Temperature differential	3...90 K			
Start temperatures	≥ 1 °C and $\Delta T \geq 0,6$ K			
Output signal				
under measuring conditions	optional M-Bus (EN 1434)			
in test mode	optional M-Bus (EN 1434) optional voltage pulses (DC 3 V)			
Behavior in the event of excessive flow				
flow rate = 2 q_s	linear			
flow rate > 2 q_s	constant			
Perm. ambient temperature				
transport and storage	5...55 °C			
operation	max. 55 °C			
Battery life	>10 years			
Connections and weight	0.6 m³/h	1.5 m³/h	1.5 m³/h	2.5 m³/h
Pipe connection (inlet and outlet)	¾"	¾"	¾"	1"
Mounting length	110 mm	80 mm	110 mm	130 mm
Weight	0.73 kg	0.65 kg	0.71 kg	0.8 kg
Temperature sensors				
Sensing element	Pt 500 Ω to EN 60751			
Connecting cable	1.5 or 2.5 m			

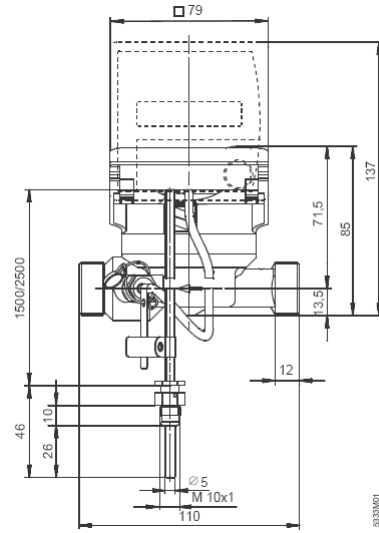
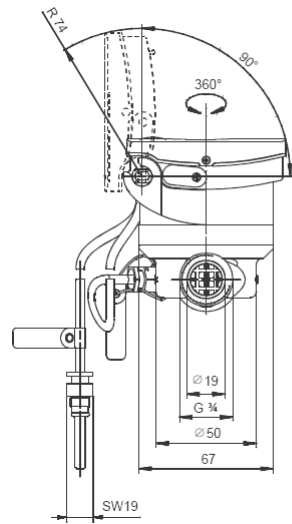
Additional technical data (only for pulse output meters WFX24...)

pulse output	open collector + protection resistor 2440 Ω +/- 10 %
polarity reversal	not possible
pulse length	≥ 100 ms
pulse pause	≥ 100 ms
max. voltage	< 30 V
current	≤ 0.1mA
impedance to ground (water pipe)	10 nF (50V)
Pulse valency	1 kWh per pulse (heat energy)

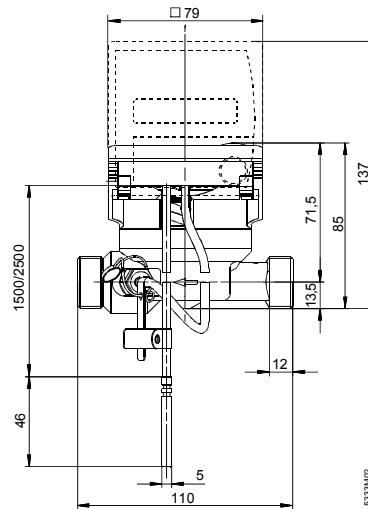
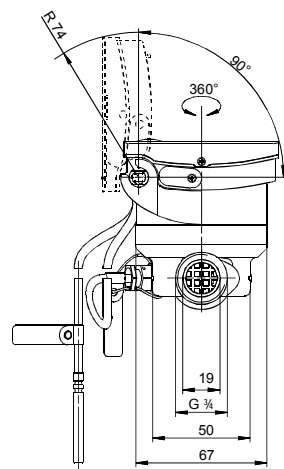
Advice: 

The service tools (ACC210, AZS210 and ABS210) can **not** be used with the pulse output meter!

Dimensions

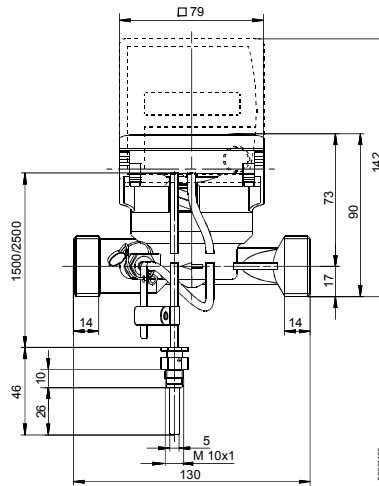
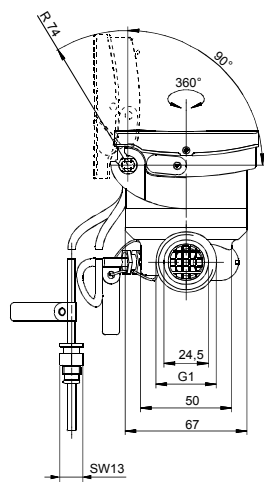


5333M01 Mounting length 110 mm, direct immersion of sensor

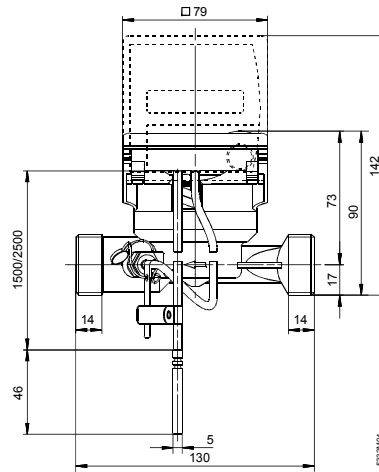
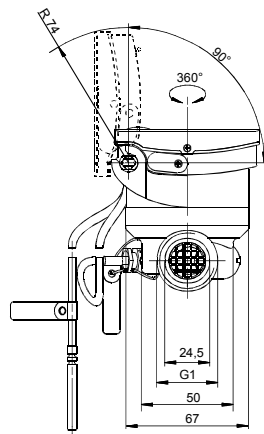


5333M02 Mounting length 110 mm, indirect immersion of sensor

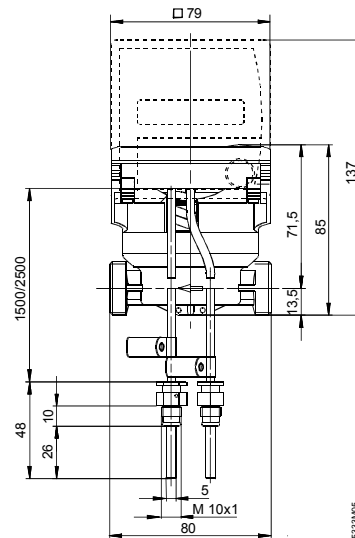
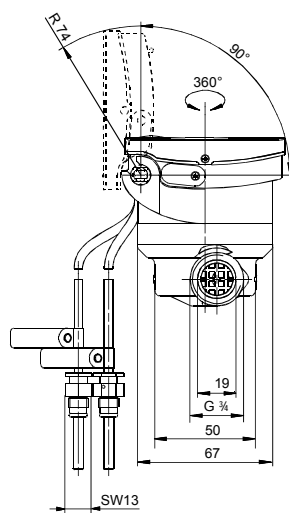
Dimensions



5333M03 Mounting length 130 mm, direct immersion of sensor



5333M04 Mounting length 130 mm, indirect immersion of sensor



5333M05 Mounting length 80 mm, direct immersion of sensors

This Data Sheet only contains general descriptions and technical features which, in the case of specific applications, may not necessarily apply, or which may change due to further development of the product. Technical details and features are binding only if explicitly agreed upon at the time of contract closure.

©2009 QUNDIS GmbH
Subject to alterations